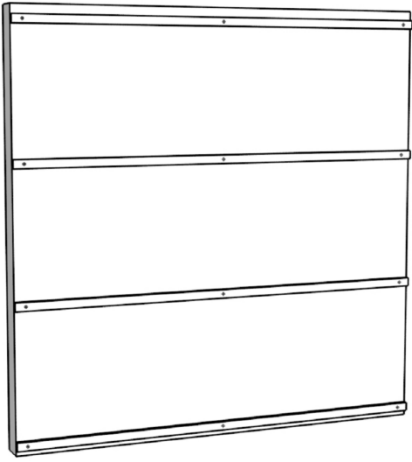
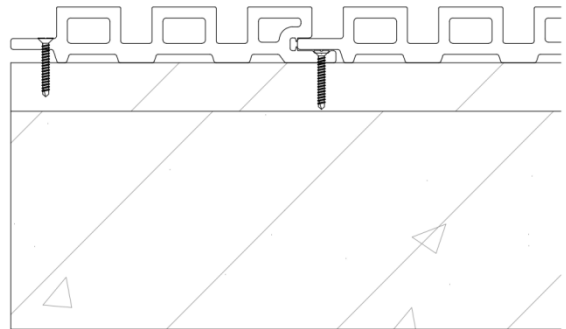
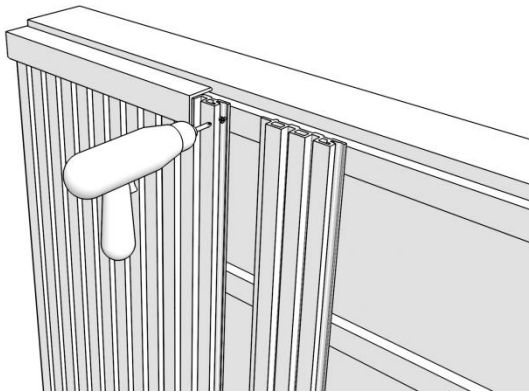


Composite Siding Installation Guide

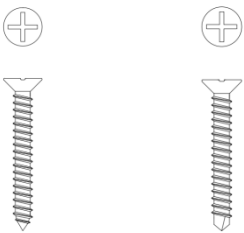
VERTICAL INSTALLATION ON ALL SUPPORTS



- Fix the aluminum joist by expansion bolts
- One expansion bolts each meter
- Center distance for joist is less than 500mm

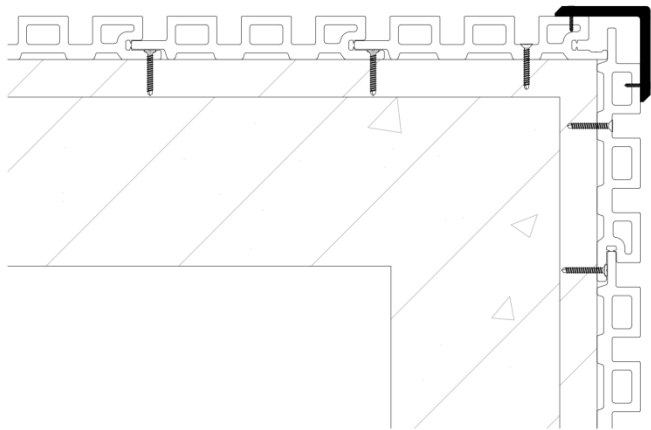


- First pre drill holes, then install screw to fix the wall panel one by one



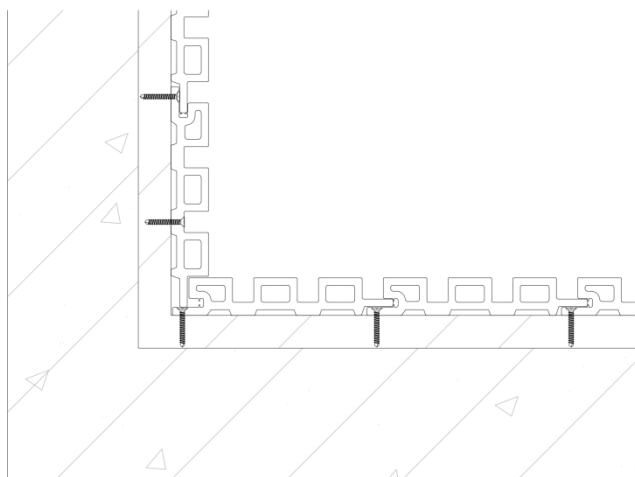
1.2 Use self tapping screws when locking the panels and installing into wood straps.

Use self drilling screws when locking the panels and installing into metal studs



1.3 External corner

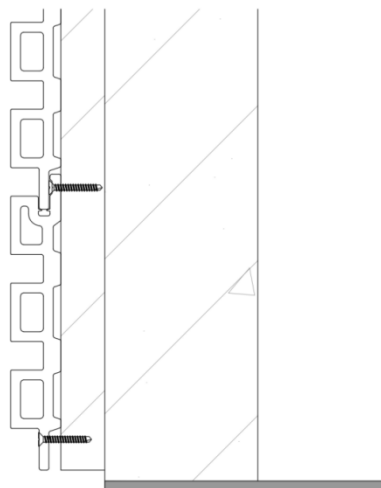
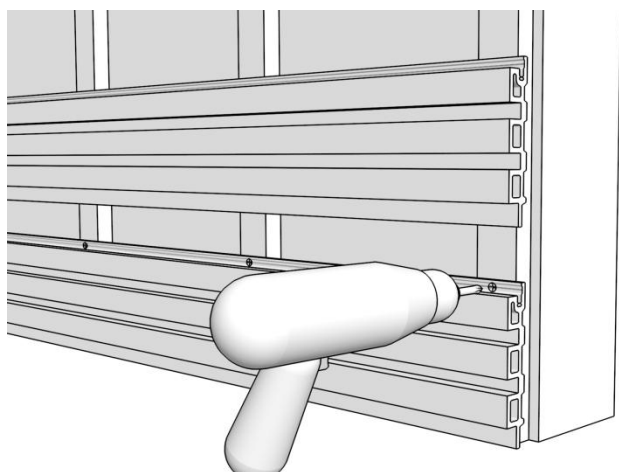
If there are external corner, use an external corner cover. And one screw each meter



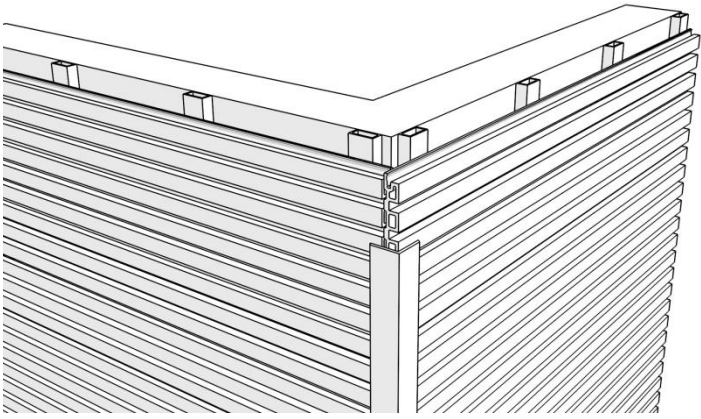
1.4 Inside corner

HORIZONTAL INSTALLATION ON ALL SUPPORTS

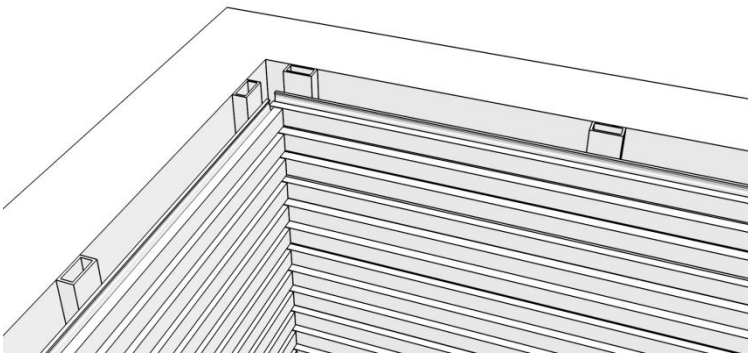
2.1 Overview



2.2 External corner



2.3 Internal corner



Project Gallery



